

Oxford Heritage and Energy Efficiency

Debbie Haynes

Oxford City Council

www.oxford.gov.uk



Exploring the process

Understand historic building status: listed, conservation area, local list, building of traditional construction ...

Understand significance using heritage values / interests

Examine physical properties and condition - maintenance

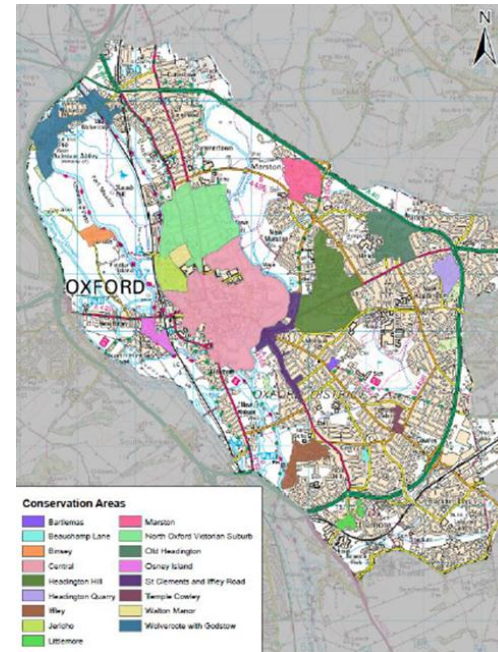
Review energy saving options: assess impacts on significance and structure and opportunities to avoid / minimise harm + cost benefit

Review energy generating options ...



Heritage value?

- Is it Listed?
- Is it in a Conservation area?
- Oxford's local character and Heritage
- Is it 'in a view'?
- More detail in the Heritage Energy Efficiency Tool



www.oxford.gov.uk



Is your home in a good state of repair?

- **Basic repairs – rainwater goods, pointing etc**
- **Breathable buildings – compatible materials and performance**



So what should you do? – use our simple checklist as a starting point

Examples of smaller, less intrusive measures:

- Draught proofing
- Loft insulation
- Shutters
- LED lighting
- Chimney balloons
- Radiator foils
- Shutters/heavy curtains
- Think ventilation as you increase airtightness
- www.oxford.gov.uk/greeningyourhistorichome



Medium cost/intrusiveness

- **Double/secondary glazing**
- **Heating options – log burner, gas boiler..**
- **Floor insulation**
- **Room in roof insulation**



Most intrusive:

- **Walls – external or internal?**
- **Renewable technologies**
- **Try previous measures first**
- **High cost, high impact**
- **Check our Technical Advice Note**



Useful links

Is your building listed?

www.oxford.gov.uk/listedbuildings

Are you in a Conservation area?

www.oxford.gov.uk/conservationareas

External Wall insulation- Technical Advice Note

www.oxford.gov.uk/externalinsulationadvicenote

Building Regulations guide

www.oxford.gov.uk/historichomebuildingregs

www.oxford.gov.uk



**OXFORD
CITY
COUNCIL**



More detailed/useful tools to give you extra advice

Energy Efficiency Checklist

www.oxford.gov.uk/greeningyourhistorichome

Heritage Energy Efficiency Tool

<http://www.oxford.gov.uk/heritageenergyefficiency>

English Heritage

<http://www.english-heritage.org.uk/your-home/saving-energy/guidance/>

STBA

<http://responsible-retrofit.org/wheel/>

www.oxford.gov.uk

